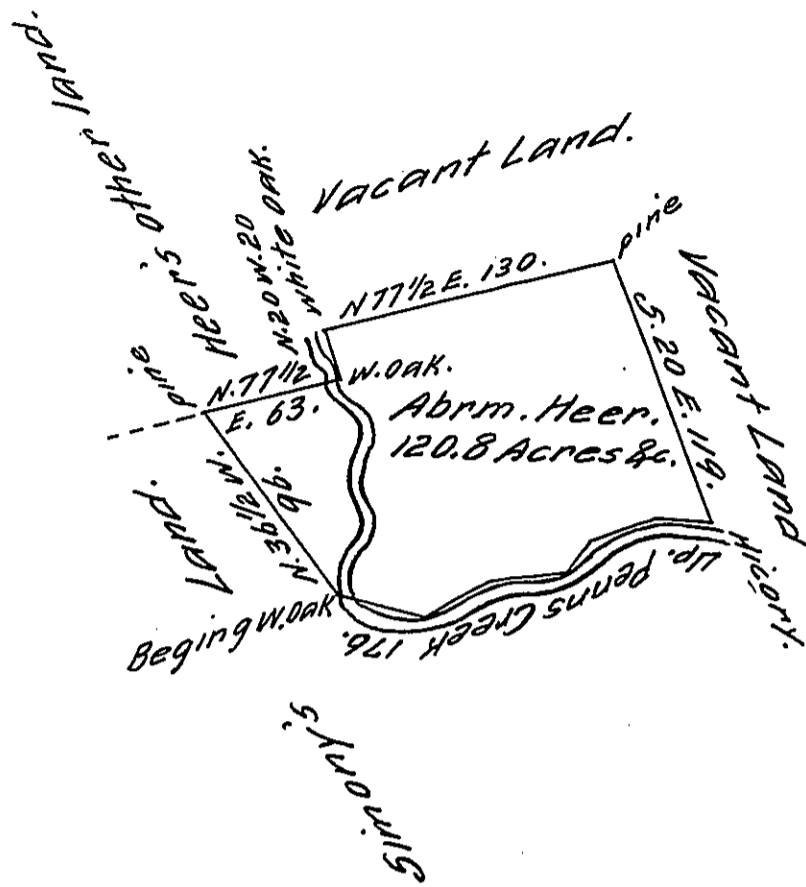


Courses and Distances
up Penns Creek.

- N. 85 W. 25
- S. 68 W 30.
- S. 95 W. 15
- S. 84 W. 36
- S. 65 W 30.
- N. 75 W 40.
- 176



The Draught of a Tract of Land called Gabriel's Mill Tract situate on Penns Creek in the County of Cumberland. containing one Hundred and Twenty Acres 144 Perches with the usual Allowance of Six Acres p. Cent for Roads. Survey'd the 26th day of May Anno Dom. 1767 For Abraham Heer In Pursuance of a Warrant from the Honble the Proprietaries Bearing Date at Philada. the 26th day of Jany. Anno Dom. 1763.

To John Lukens Esqr. S. G. p. Wm. Maclay. D. S.
of Pennsylvania.

IN TESTIMONY that the above is a copy of the original remaining on file in the Department of Internal Affairs of Pennsylvania, made conformably to an Act of Assembly approved the 16th day of February, 1833, I have hereunto set my Hand and caused the Seal of said Department to be affixed at Harrisburg, this sixteenth day of October 1917

Henry Howell,
Secretary of Internal Affairs.